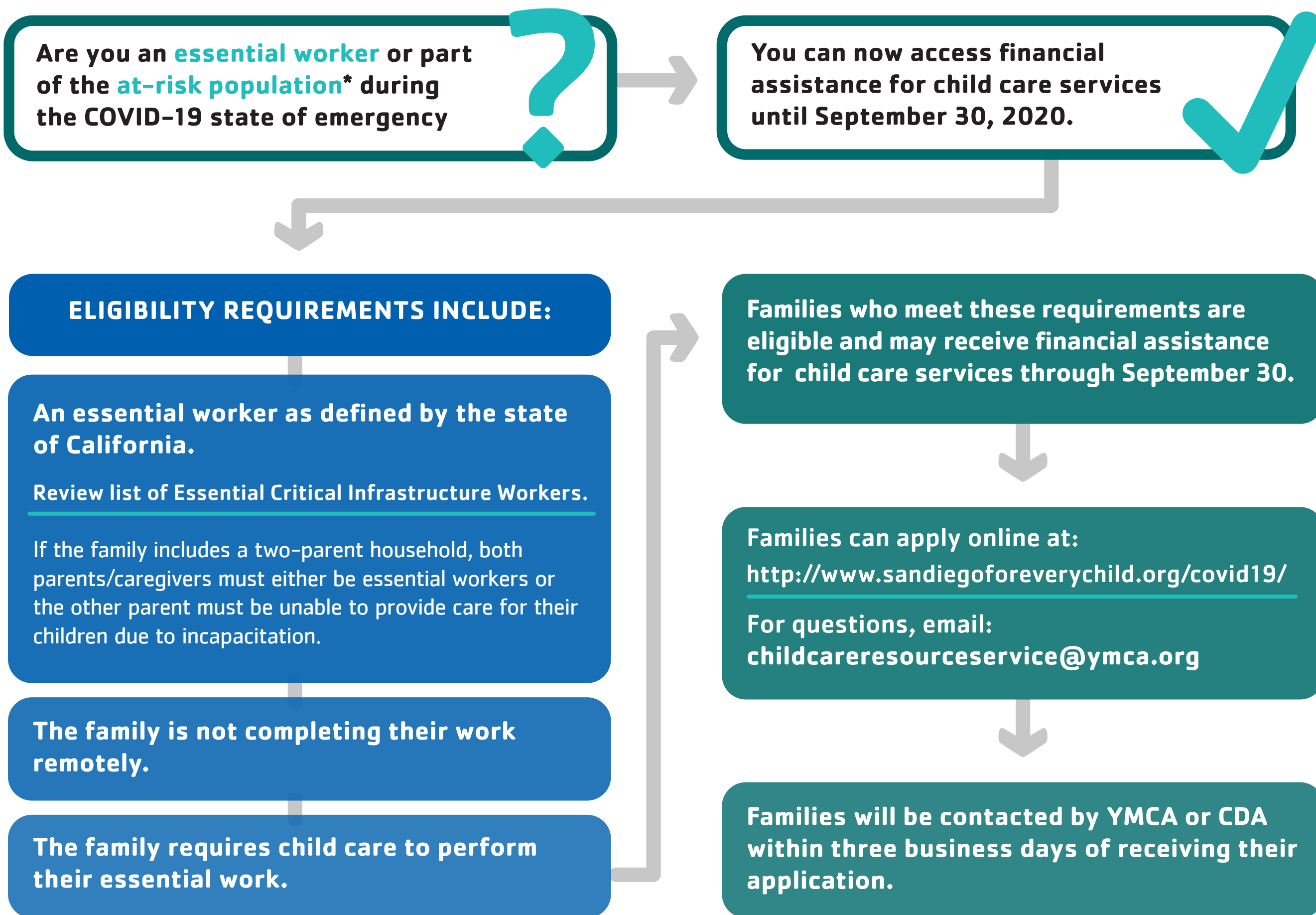


SAN DIEGO ESSENTIAL WORKERS & AT-RISK POPULATIONS CAN NOW ACCESS FINANCIAL ASSISTANCE FOR CHILD CARE SERVICES THROUGH SEPTEMBER 30, 2020

YMCA CHILDCARE RESOURCE SERVICE | CHILD DEVELOPMENT ASSOCIATES | SAN DIEGO FOR EVERY CHILD

San Diego County's two Alternative Payment Program agencies, Child Development Associates and YMCA Childcare Resource Service, are working together to support essential workers and at-risk populations with financial assistance for child care services. Eligible families will receive an assigned benefit amount that they can use with their current or a new child care provider. Providers must be located in San Diego County. A limited amount of funding is available, therefore it is unlikely that all eligible families will receive services.



Please contact the Child Care Referral Line at **1-800-481-2151** or by email at myreferral@ymca.org to get a list of child care providers located in San Diego County. Having a provider will speed up your approval for child care subsidy.

*At-Risk Populations include: children at risk of abuse, neglect, or exploitation; children eligible through Emergency Child Care Bridge Program for Foster Children; families experiencing homelessness, or children of domestic violence survivors.